

SAFEWALK

PEDESTRIAN PRESENCE SENSOR



SafeWalk is an above-ground sensor for pedestrian detection.

SafeWalk integrates stereovision technology and intelligent detection for **pedestrian presence detection** at kerbsides.

The main goal of SafeWalk is to **improve pedestrian operations and safety at traffic signals**. By detecting waiting pedestrians and, at the same time, by managing and controlling traffic lights more dynamically, this intelligent sensor reduces unnecessary delays to both pedestrians and motorists.

This **above-ground sensor** is designed to view a detection zone adjacent to the pole to which it is mounted. Stationary pedestrians or those moving in the designated zone waiting to cross a roadway will generate a detect state 24/7 in urban conditions.

SafeWalk is based on **field-proven** stereovision video detection technology and is part of the **Traficon** product range. Traficon is worldwide recognized as the market leader in traffic video detection.

KEY FUNCTIONALITIES

- » DETECTION OF PEDESTRIANS WAITING TO CROSS THE ROAD
- » DETECTION OF APPROACHING PEDESTRIANS INTENDING TO CROSS THE ROAD

KEY BENEFITS

- » ALL-IN-ONE SENSOR (CAMERA + DETECTOR)
- » ABOVE-GROUND SENSOR
- » STEREOVISION 3D TECHNOLOGY
- » ACCURATE ZONE POSITIONING
- » MPEG-4 STREAMING VIDEO
- » IP-ADDRESSABILITY
- » RELIABLE DETECTION 24/7
- » FIELD-PROVEN PEDESTRIAN DETECTION ALGORITHM

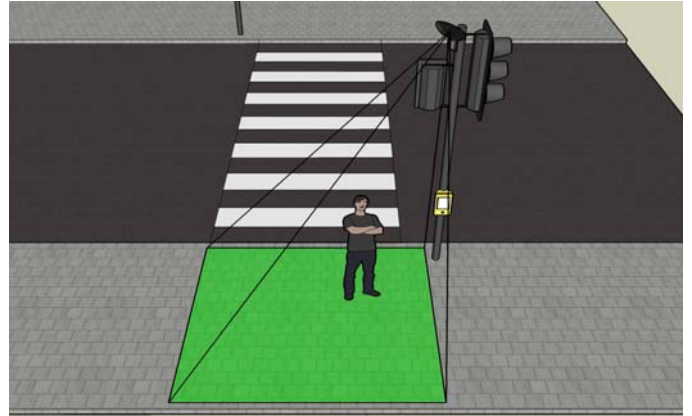


By monitoring the kerbside near zebra crossings, SafeWalk can increase safety and efficiency for both pedestrians and motorists.

KERBSIDE PEDESTRIAN DETECTION

The stereovision video image processing technology is used for the detection and monitoring of pedestrians who are waiting to cross the street within a user definable zone. As soon as a pedestrian enters a predefined detection zone ("virtual loop") and is waiting for a configurable time, a detection output is provided to the traffic light controller, enabling the software to **activate the green time for the pedestrian**.

The SafeWalk can hold **the red time for pedestrians** for as long as there is no pedestrian presence, making traffic flow more fluent and efficient.



SafeWalk detects pedestrians waiting to cross the road.



SafeWalk installation is quick and easy.

QUICK SYSTEM INSTALLATION

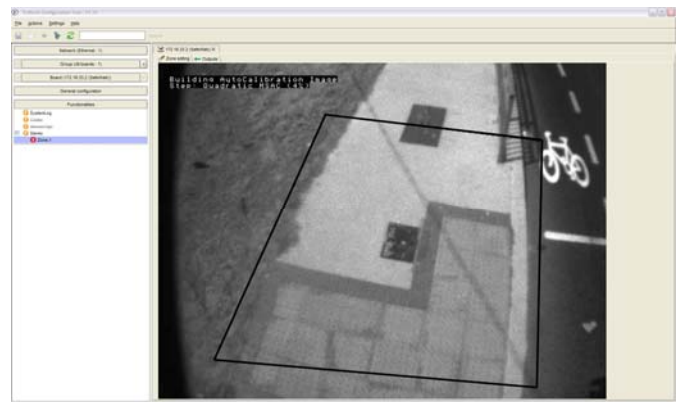
SafeWalk is designed to avoid expensive installation and maintenance costs. As such, **the installation process is quick and simple**: install it, connect it and start analyzing the pedestrian detection zone.

This sensor can simply be mounted on existing infrastructure. Also, a flexible bracket allows horizontal and vertical mounting.

USER-FRIENDLY SYSTEM CONFIGURATION

Configuration of the sensor is done via portable PC with pre-installed **user-friendly** SafeWalk software. Configuration takes less than five minutes and can be performed by any user – no specialist knowledge is required.

Using camera images (JPEG snapshot), virtual pedestrian detection zones can be positioned accurately. Verification and viewing of the detection is possible via **MPEG-4 streaming video**.



No specialist knowledge is required for configuring this sensor.